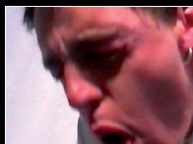


Brujo Art Company
Presents

INNER PROJECTIONS FROM A BROKEN MAN



A video collection by
DANNY GERMANSEN



www.BrujoArt.com

INNER PROJECTIONS FROM A BROKEN MAN

Content:

ALIENATION & LONELINESS - 1 min.

Actor: Marek Magierecki
Voice over: Joshua Sandler
Synopsis: The feeling of being alienated and lonely in modern society.

BEATEN - 1 min.

Actor: Marek Magierecki
Camera: Steffen Graumann
Synopsis: The feeling and pain of an mental breakdown. (Your fragile eggshell mind being beaten down again and again)

NO LOVE - 1 min.

Voice over: Joshua Sandler
Synopsis: Lost in darkness of life, hungry for love, companionship and tenderness.

COLD - 1 min.

Actor: Marek Magierecki
Music: Daria Baiocchi
Camera: Steffen Graumann
Synopsis: I feel the world as hard cold concrete.

NUMB - 1 min.

Actor: Marek Magierecki
Music: Brian Madsen
Synopsis: The feeling of alienation towards your body and about an all emotional emptiness and numbness.

WISH - 1 min.

Actor: Marek Magierecki
Voice over: Joshua Sandler
Synopsis: Picturing lonely moments in mental pain and solitude on the sofa.

CHOICE - 1 min.

Actor: Marek Magierecki
Synopsis: To make the choice hanging over the edge, to live or die.

SAFE - 1 min.

Actors: Herdis Brink, Lærke Brink and Marek Magierecki
Music: Brian Madsen
Synopsis: Remembering the safe of childhood in the arms of your parents.

SLAVE OF THE MIND - 3 min.

Actor: Simon Mulvad
Synopsis: Ten phases in a mental breakdown, performed in pictures and acting. The film tells about different phases such as anxiety, loneliness, breakdown and suicide.

COINCIDENCE - 8 min.

Actors: Bianca Klingenberg and Simon Mulvad.
Music: Danny Germansen
Synopsis: An 8 min. short film about loneliness and alienation in modern society and the struggle to find love and friendship when you are in the need of it.

TALES FROM THE DOWN BELOW OF SOCIETY

As an ongoing problem in the industrialized world the human race gets more and more lonely and alienated.

The world turns faster and faster and people are more busy then ever working, making career, making family, making money and having all the right material stuff and doing all social acceptable thing that is the norm of society!

It is in this world where the sick and weak humans goes under the radar and lives outside society. They live on the edge of society in isolation, loneliness and alienation!

The films and videos by Danny Germansen show the humans who are down and out by society without the possibility to save themselves! It is the mentally ill and physically challenge who is not able to follow the fast modern society!

No one thinks about these people, they are on their own, sometimes caught in a life full of pain. Some choose suicide as their last resource.

It is with inspiration in his own life that Danny makes these videos/films that sometimes can seem embarrassing and ruthless. But only are true emotions that all humans is capable of to feel if they where in the same situation.